

# Go outside and touch grass: How residents interact with available nature

Amy Lindteigen

ABS 494 – Urban Wildlife Ecology

College of Integrative Sciences and Arts, Arizona State University, Polytechnic

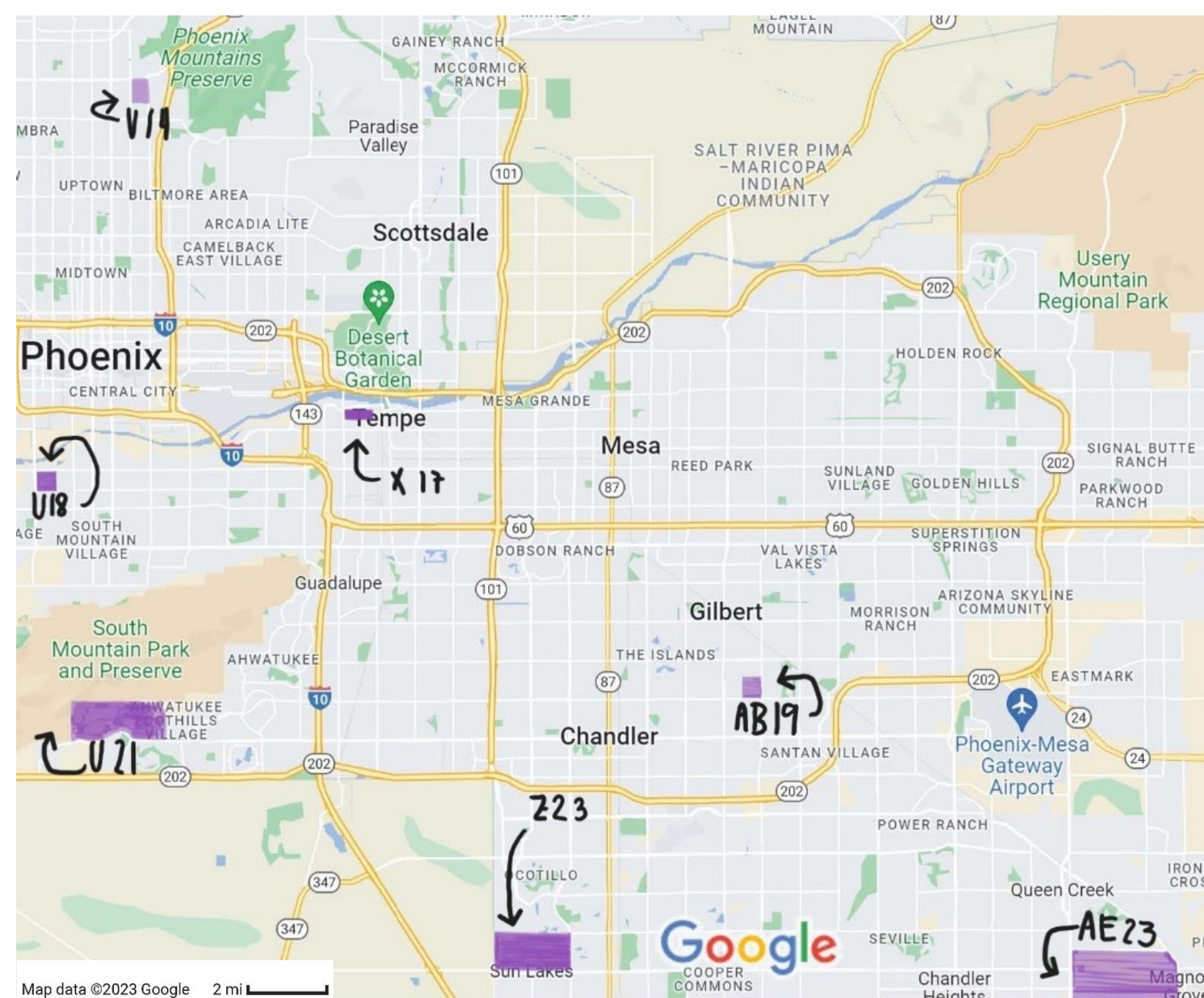
## Introduction and Objectives

Public perceptions of wildlife have gradually become more positive, and scientists are learning more about urban wildlife behavior, but awareness of what to do in a Human-Wildlife interaction is still low (1, 2, 3). Most users on the citizen science app iNaturalist are casual observers, predominantly uploading on the weekends (4). Some areas have more developed structures and less space for nature, which changes the animals present and can increase zoonotic hazards (5, 6, 7).

My goal was to learn more about how residents in seven CAP LTER neighborhoods interact with nature, then build a profile for each and create a podcast episode to discuss the findings.

## Methods

Demographics from 2022 census: median income, homeowners  
“Available Nature” measurement: iTree categories



Nature interactions:  
# of unique  
iNaturalist users in  
the last 3 years

Fig 1. CAP LTER neighborhoods used for project highlighted in purple with code label.

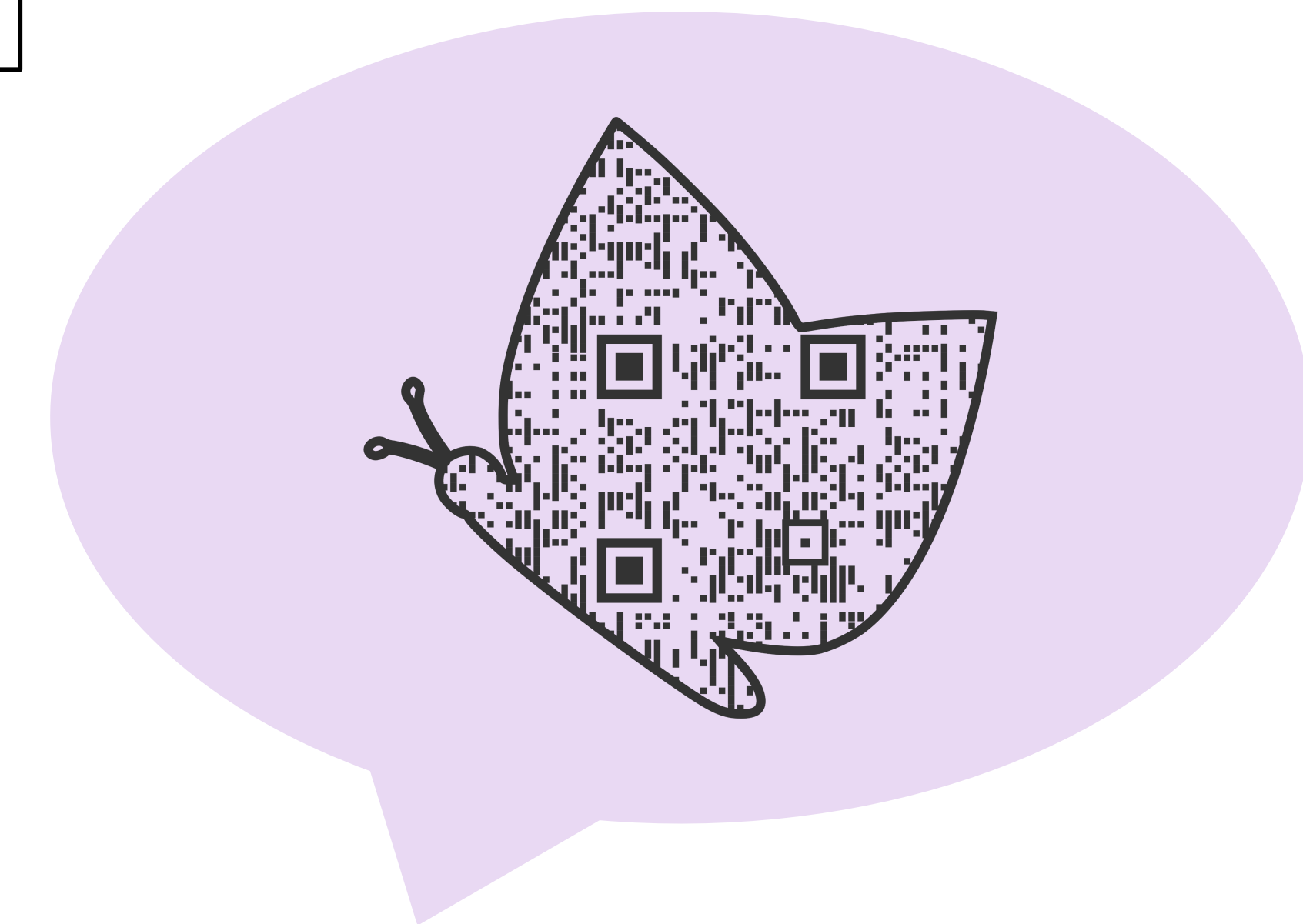
## Results

Area	iNaturalist Users	Median income (USD)	Homeowners (%)	Impervious surface (%)	Herbaceous/tree surface (%)	Bare ground surface (%)	Water surface (%)
U21	39	\$183,051	89.90%	30%	50%	20%	0%
AE23	25	\$180,668	100%	46%	28%	21%	7%
Z23	25	\$61,815	87.35%	52%	30%	18%	0%
X17	7	\$53,643	4.24%	58%	26%	16%	0%
V14	7	\$56,841	15.41%	60%	20%	20%	0%
AB19	3	\$86,850	87.35%	56%	18%	14%	12%
U18	3	\$69,808	78.40%	52%	20%	28%	0%

Table 1. Summary of Data collected from Crosstown Assessment

## Conclusions

- Neighborhoods with the most unique iNaturalist users have the highest percentages of herbaceous/tree surfaces of all the neighborhoods → more nature available
- Less available nature does not necessarily mean less iNaturalist users to interact with it
  - Neighborhoods with less iNaturalist users may not have time to post their nature interactions
  - Neighborhoods with less nature may go elsewhere to experience nature



Want to hear more about why not all neighborhoods interact with nature equally?  
Scan this QR code for a podcast episode!

## Literature Cited & Acknowledgements

1. Basak, S. M., et al. (2022). *The Science of the Total Environment*, 834, 155603–155603.
2. Magle, S. B., et al. (2019). *Frontiers in Ecology and the Environment*, 17(4), 232–239.
3. Magle, S. B., et al. (2021). *Global Change Biology*, 27(21), 5446–5459.
4. Di Cecco, G. J., et al. (2021). *Bioscience*, 71(11), 1179–1188. <https://doi.org/10.1093/biosci/biab093>.
5. Fidino, M., et al. (2021). *Ecological Applications*, 31(2), e02253-n/a.
6. Brown, J. A., et al. (2021). *Sustainability (Basel, Switzerland)*, 13(20), 11533-.
7. Combs, M. A., et al. (2022). *Global Change Biology*, 28(5), 1705–1724.

I would like to thank my fellow classmates in ABS 494: Urban Wildlife Ecology for contributing to the Crosstown Assessment datasheet I used. I would also like to thank Ilana Cruywagen for helping me record and edit the associated podcast with this project. Lastly, I would like to thank Dr. Heather Bateman, without whom this project would not be possible.